

Live the Dream!



The Pelee

4 or 5 Bedrooms
 3 ½ or 4 ½ Bathrooms
 2+ or 3 Car Garage / Golf Cart Parking

Base Home

1st Floor1,308 sq. ft.
 2nd Floor1,670 sq. ft.
 2,978 sq. ft.
 Garage Base.....486 sq. ft.

Optional Rooms

3 Car Extended Garage ...160 sq. ft.
 Sun Room.....126 sq. ft.
 Bedroom 5 Extended102 sq. ft.
 Convert 5th Bedroom to
 Unfinished Attic(371) sq. ft.

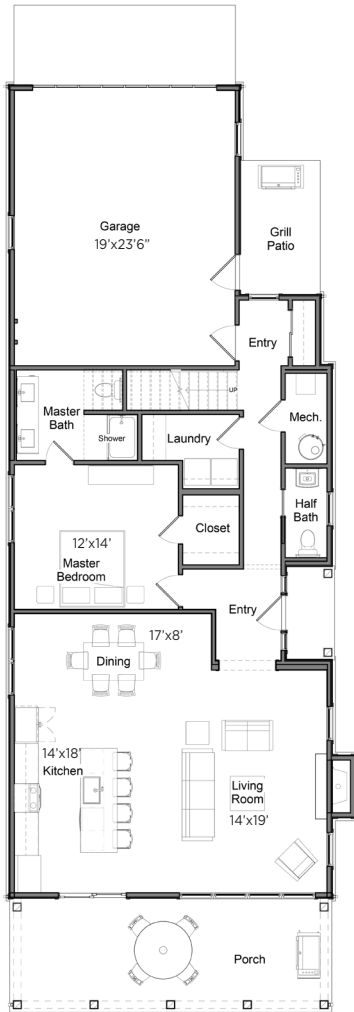
Base Home with Unfinished Attic 2,607 sq. ft.



THE PELEE 4 or 5 Bedrooms | 3 1/2 or 4 1/2 Bathrooms | 2+ or 3 Car Garage / Golf Cart Parking

First Floor Plan Base

Building Overall Dimensions 28'x80'







Second Floor Plan Base



The Pelee - Polaris





- 
 Board+Batten
Polaris
- 
 Lateral Siding
Polaris
- 
 Roof
Moire Black
- 
 Metal Roof
Black



The Pelee - Nantucket



- 
 Board+Batten
Nantucket
- 
 Lateral Siding
Aspen White
- 
 Roof
Moire Black
- 
 Metal Roof
Black

Elevations, floor plans and landscaping are for illustration purposes only and may show optional features. Developer reserves the right to change without notice. All dimensions and Sq. Ft. listed are approximate. Construction plans may vary.