

# *Live the Dream!*



## **The Green**

**3 Bedrooms**  
**3 Bathrooms**  
**2+ Car Garage / Golf Cart Parking**

1st Floor .....1,450 sq. ft.  
2nd Floor .....375 sq. ft.  
**1,825 sq. ft.**

Garage.....480 sq. ft.  
Optional Sun Room..... 125 sq. ft.  
Base Home with  
Added Sunroom ..... **1,950 sq. ft.**

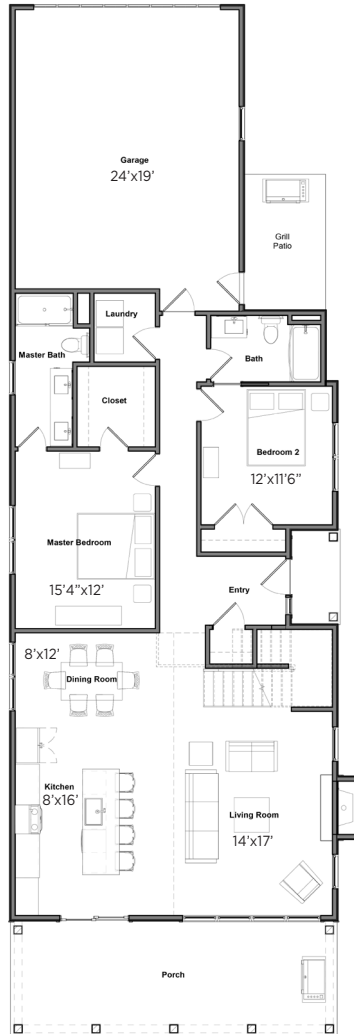


# THE GREEN 3 Bedrooms | 3 Bathrooms | 2+ or 3 Car Garage / Golf Cart Parking

## First Floor Plan Base

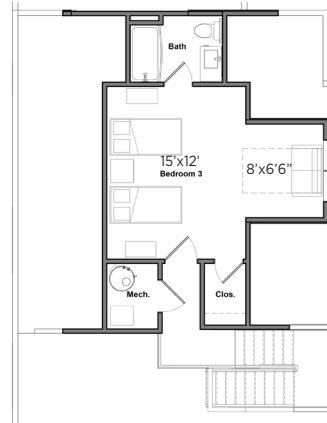
Building Overall Dimensions Appx. 28'x80'

1,450 sq. ft.



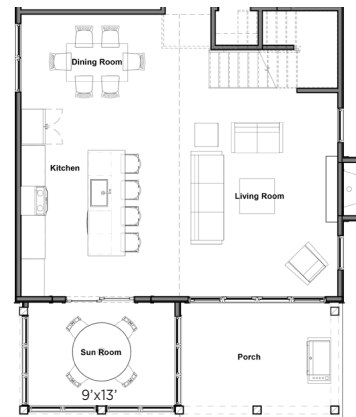
## Second Floor Plan Base

375 sq. ft.



## First Floor Plan with Optional Sunroom

1,575 sq. ft.



Sunroom can be placed on either side of the Living Room

## The Green - Indigo



Board+Batten  
Indigo



Roof  
Moire Black



Metal Roof  
Black



## The Green - Nantucket



Board+Batten  
Nantucket



Roof  
Moire Black



Metal Roof  
Black

Elevations, floor plans and landscaping are for illustration purposes only and may show optional features. Developer reserves the right to change without notice. All dimensions and Sq. Ft. listed are approximate. Construction plans may vary.

Sales Center located at 4791 Cottage Lane (off Cemetery Road), Port Clinton, OH 43452 | 419-797-0230 | FairwayCottagesCIC.com