

Live the Dream!



The Bass

3 Bedrooms
3 Bathrooms
2+ Car Garage / Golf Cart Parking

1st Floor1,450 sq. ft.
2nd Floor375 sq. ft.
1,825 sq. ft.

Garage.....480 sq. ft.
Optional Sun Room..... 125 sq. ft.
Base Home with
Added Sunroom **1,950 sq. ft.**

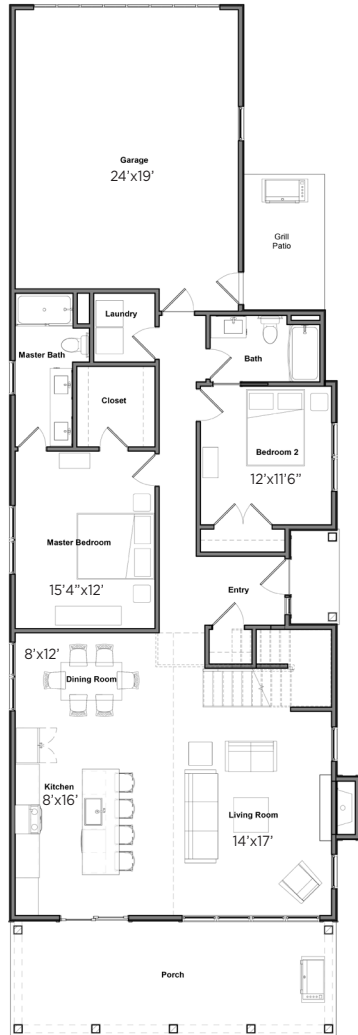


THE BASS 3 Bedrooms | 3 Bathrooms | 2+ or 3 Car Garage / Golf Cart Parking

First Floor Plan Base

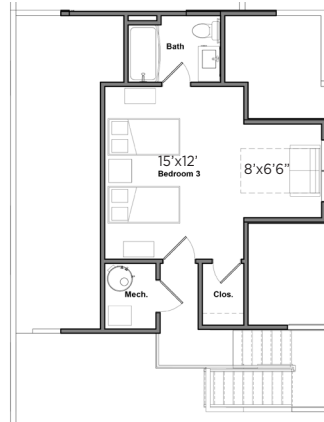
Building Overall Dimensions Appx. 28'x80'

1,450 sq. ft.



Second Floor Plan Base

375 sq. ft.

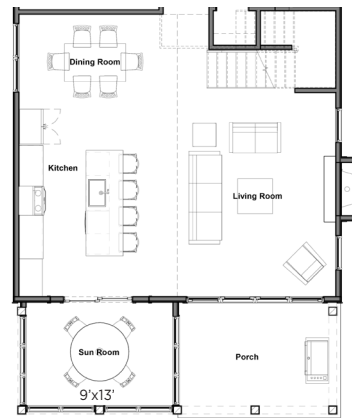


The Bass - Aspen White



First Floor Plan with Optional Sunroom

1,575 sq. ft.



Sunroom can be placed on either side of the Living Room

The Bass - Polaris



Elevations, floor plans and landscaping are for illustration purposes only and may show optional features. Developer reserves the right to change without notice. All dimensions and Sq. Ft. listed are approximate. Construction plans may vary.