

Live the Dream!



The Ballast

4 or 5 Bedrooms
3 ½ or 4 ½ Bathrooms
2+ or 3 Car Garage / Golf Cart Parking

Base Home

1st Floor 1,308 sq. ft.
2nd Floor 1,670 sq. ft.
2,978 sq. ft.
Garage Base 486 sq. ft.

Optional Rooms

3 Car Extended Garage ... 160 sq. ft.
Sun Room 126 sq. ft.
Bedroom 5 Extended 102 sq. ft.
Convert 5th Bedroom to
Unfinished Attic (371) sq. ft.

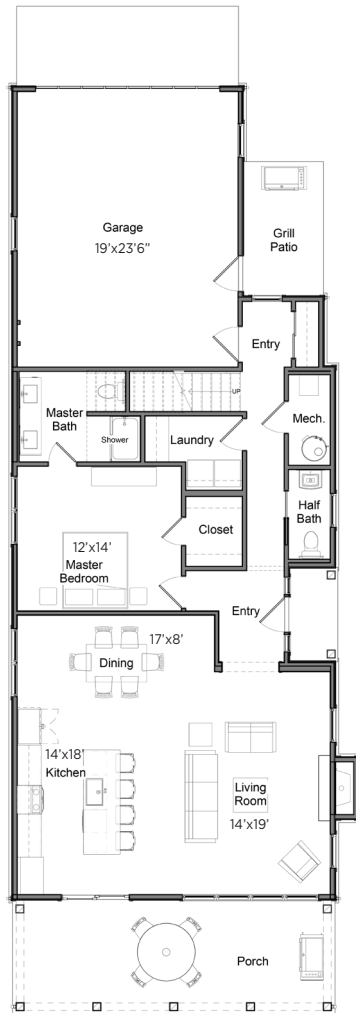
Base Home with Unfinished Attic 2,607 sq. ft.



THE BALLAST 4 or 5 Bedrooms | 3 ½ or 4 ½ Bathrooms | 2+ or 3 Car Garage / Golf Cart Parking

First Floor Plan Base

Building Overall Dimensions 28'x80'



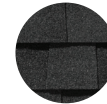
Second Floor Plan Base



The Ballast - Aspen White



Board+Batten
Aspen White



Roof
Moire Black

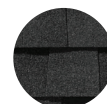


Metal Roof
Black

The Ballast - Nantucket



Board+Batten
Nantucket



Roof
Moire Black

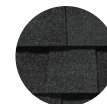


Metal Roof
Black

The Ballast - Indigo



Board+Batten
Indigo



Roof
Moire Black



Metal Roof
Black



Elevations, floor plans and landscaping are for illustration purposes only and may show optional features. Developer reserves the right to change without notice. All dimensions and Sq. Ft. listed are approximate. Construction plans may vary.

Sales Center located at 4791 Cottage Lane (off Cemetery Road), Port Clinton, OH 43452 | 419-797-0230 | FairwayCottagesCIC.com