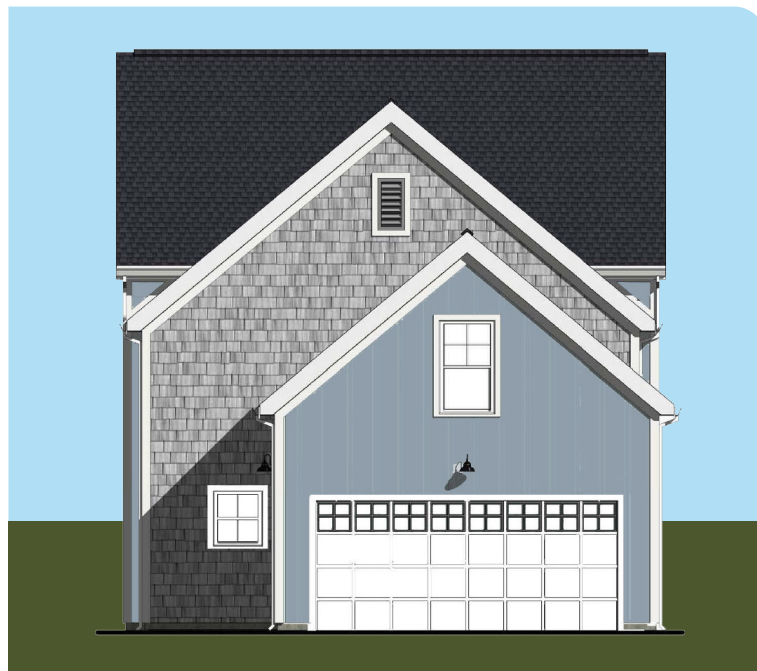


Live the Dream!



The Gibraltar

4 or 5 Bedrooms
3 ½ or 4 ½ Bathrooms
2+ or 3 Car Garage / Golf Cart Parking

Base Home

1st Floor 1,308 sq. ft.
2nd Floor 1,670 sq. ft.
2,978 sq. ft.
Garage Base 486 sq. ft.

Optional Rooms

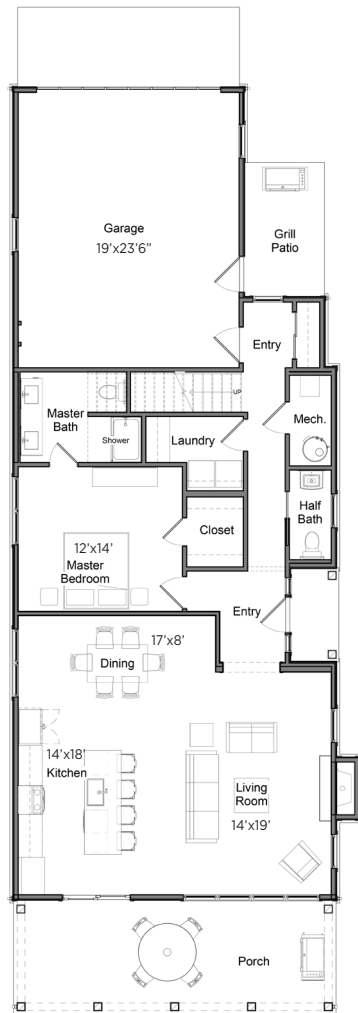
3 Car Extended Garage ... 160 sq. ft.
Sun Room 126 sq. ft.
Bedroom 5 Extended 102 sq. ft.
Convert 5th Bedroom to
Unfinished Attic (371) sq. ft.



THE GIBRALTAR 4 or 5 Bedrooms | 3 ½ or 4 ½ Bathrooms | 2+ or 3 Car Garage / Golf Cart Parking

First Floor Plan Base

Overall Dimensions 28'x80'



Second Floor Plan Base



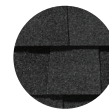
The Gibraltar Polaris



Board+Batten
Polaris



Shake
Cottonwood

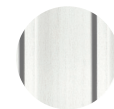


Roof
Moire Black



Metal Roof
Black

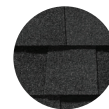
The Gibraltar Aspen



Board+Batten
Polaris



Shake
Cottonwood



Roof
Moire Black



Metal Roof
Black



Floor plans and landscaping are for illustration purposes only, Developer reserves the right to change without notice. Floor plans may show optional features. All dimensions and Sq. Ft. listed are approximate. Construction plans may vary.

Temporary Sales Center located at 2663 NW Catawba Road, Port Clinton, OH 43452 | 419-797-0230 | FairwayCottagesCIC.com